


FISHWAY STATUS REPORT

Date: 8/15/2015
Inspection Period: 8/9/2015 thru 8/15/2015

All JD Fishways are inspected twice per day during fish season, Mar. 1 - Nov. 30
 Frequent monitoring of the PLC displays in SMF Fisheries Office as necessary.



**US Army Corps
of Engineers**
Portland District

JOHN DAY DAM
 JD/WC Project-Fisheries
 P.O. Box 823
 Rufus, Oregon 97050
 Phone: 541-506-7860

John Day Dam	Inspections	Criteria	Total Number of Inspections: 14	Temperature: 72 F
	Out of Criteria	Limit		Secchi: 6.0 Ft.
NORTH FISHWAY			4 out of 6 AWS pumps available since 12/23/14	
Exit differential	0	≤ 0.5'		
Exit Control weirs	0	High setting	High setting is normal for JDN	
Count station differential	0	≤ 0.3'		
Weir crest depth (DS gauge)	0	1.0' ± 0.1'		
Entrance differential	0	1.0' - 2.0'	AVG 1.5	
SOUTH FISHWAY			3 AWS Turbines in regular service since 2/28/15	
Exit differential	0	≤ 0.5'		
Exit Control weirs	0	Mid Setting	Mid setting is normal for JDS	
Count station differential	0	≤ 0.3'		
Weir crest depth (US gauge)	0	1.0' ± 0.1'		
South entrance differential	0	1.0' - 2.0'	AVG 1.6	
Entrance weir SE1	0	depth (≥ 8')	AVG 9.4	
Collection channel velocity	0	1.5 - 4 fps	AVG 3.09	
N. Entrance PH(Bay 19)differential	0	1.0' - 2.0'	AVG 1.4	
Entrance weir NE1	0	depth (≥ 8')	AVG 8.3	
Entrance weir NE2	0	depth (≥ 8')	AVG 8.3	
JUVENILE PASSAGE			NO mortalities (0.00 %) in the SMF samples by PSMFC continuous since 7/12.	
Forebay/bypass conduit differential	0	4.0' - 5.0'	AVG 4.6	
Submersible traveling screens	0	visual inspect	Monthly Video inspection of all STSs is scheduled for the next week, 8/17.	
Turbine trashrack drawdown	0	<1.5', wkly	Monthly MU trashracks' raking is scheduled for the week of 8/24.	
Vert barrier screen drawdown	0	<1.5', wkly		
Spill volume	0	30%	Fish spill and TSWs' operation continues since 4/10/15 per FOP	
Spill pattern	0	per FPP	Per 2015 FOP (summer)	
Turbine Unit Priority	0	per FPP		
Turbine 1% Efficiency	0	per FPP		

SMOLT MONITORING FACILITY

Operation:

SMF in bypass mode beginning 6/28 @ approximately 11am. Limited sampling resumes for 6 hours (7am-1pm) every Monday and Thursday since. JD Fisheries crew continues 24/7 swing shift schedule as required by FPP; it will continue this until the end of sampling season on 9/15.

NO mortalities (0.00%) in the SMF samples by PSMFC since 7/12.

Debris load: very little debris.

Maintenance:

All devices working well without any issues at this time

Research:

None

Fallbacks: AVG: 7 MAX: 8 MIN: 5

OTHER JOHN DAY ISSUES:

Birds :

see the Avian Numbers tab. We report all species and locations, but in reality only gulls in the tailrace BRZ are relevant at JD.

Record numbers, well over 300 White Pelicans have been estimated at the island downstream of the JD tailrace BRZ ! However, they didn't target the tailrace BRZ until recently (July.) We believe that the WP are currently feeding on the abundant shad and are increasingly entering the JD tailrace BRZ for that reason.

USADA avian hazing ended on July 30th

The following avian lines have snapped this season and are out of commission; 44, 46, 56, and 60. Line 55 snapped 7/17 bringing the total snapped lines to 7 (lines 25 and 26 have been out of commission since 2013) 118 lines remain. Planning to replace in September/October

Operations:

JD North Fishway in regular service; 5 out of 6 AWS pumps are available. Repair work on pump 4 continues; pump 3 has vibration issues and should be the last last in service.

JD South Fishway in regular service with 3 AWS Turbines; it is meeting the optimal FPP criteria.

MU Gatewell Drawdowns: Differentials are checked Wednesdays and Sundays; all gatewells were in criteria.

Found an estimated 40 adult sturgeon, 3 to 5 feet in length, in roller gate slots A & B of MU 15 on Sunday, 8/2 PM. Attempts to dip basket unsuccessful on 8/5.

JD OPS attempted to flush fish back into the draft tube with " speed-no load" , with the roller gates pushing the fish down; unsuccessful on 8/6. MU 15 OOS due to electrical issues 8/5 through 8/10. MU 15 was finally dewatered on 8/14 and all sturgeon were salvaged from its scroll case by transfer back into the draft tube.

Maintenance:

JD North AWS pumps: four out of total six are available. Repair of AWS pump # 4 by a contractor started on 1/26 & is ongoing.

Calibration: All gauges/ sensors are within the criteria of 0.3' .

Research:

2015 Adult Fish Counting by Normandeau Associates commenced on 1 April, 2015 and will continue daily through 1 November.

Lamprey trapping and collection of adults & juveniles for various tribal and non-tribal studies complete for the 2015 season.

Dam angling to remove NPM from JD PH tailrace, by a crew from Washington F&W underway. 2,801 season total as of 8/9/15.

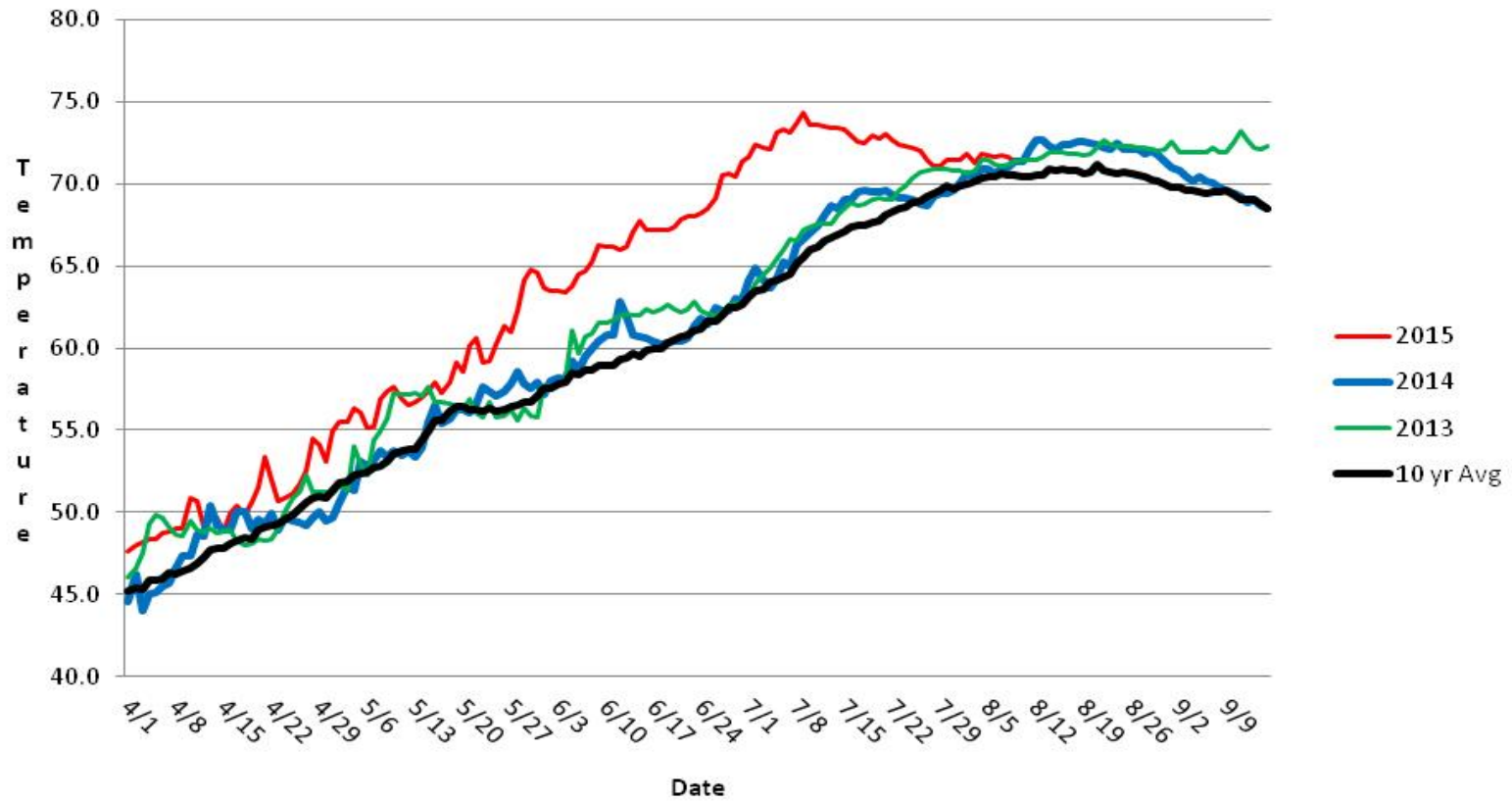
Proposal by PSMFC to install Adult PIT antennas at both JD Fishways is pending; possible installation during the next winter maintenance season 2015/16.

JD North LPS submersible pump (water supply) was modified/ repaired on 8/6. LPS in service and trapping lamprey since. FFU crew in charge/ handling trapped fish

Kevin Moynahan
OPM John Day/Willow Creek Project

Date: August 15, 2015

JDA SMF Water Temp



JDA Collection Channel Velocity

Date 31-Jul-15

By: MDL

Bay(s)	Time	Sec.	Velocity (f/s)
0-2	1:19	79	2.28
2 - 4	2:18	138	3.05
4 - 6	3:09	189	3.53
6 - 8	4:16	256	2.69
8 - 10	5:20	320	2.81
10 - 12	6:23	383	2.86
12 - 14	7:35	455	2.50
14 - 16	8:18	498	4.19
16 - 18	9:04	544	3.91
			3.09

John Day Dam
Avian Zones



John Day Weekly Averages

	Temp:	Secchi:	Fallbacks
Sun	72	6.0	Bypass
Mon	72	6.0	5
Tues	72	6.0	Bypass
Wed	72	6.0	Bypass
Thur	72	6.0	8
Fri	72	6.0	Bypass
Sat	72	6.0	Bypass
AVG:	72	AVG: 6.0	AVG 7
			MAX 8
			MIN 5

	NE1	NE2	S.Ent	SE1	N.Ent	JBS Diff	Bay19
Sun	9.0	8.9	1.9	9.6	1.6	4.6	1.5
Sun	8.2	8.8	1.6	9.6	1.6	4.6	1.2
Mon	8.1	8.1	1.9	8.9	1.5	4.6	1.5
Mon	8.2	8.2	1.4	10.2	1.5	4.5	1.4
Tues	8.1	8.1	1.8	8.5	1.6	4.7	1.6
Tues	8.2	8.3	1.4	9.2	1.4	4.5	1.3
Wed	8.4	8.6	1.6	9.7	1.5	4.5	1.3
Wed	8.1	8.3	1.5	10.1	1.5	4.5	1.3
Thur	8.2	8.2	1.6	9.4	1.5	4.5	1.5
Thur	8.3	8.3	1.6	9.9	1.4	4.6	1.3
Fri	8.2	8.3	1.6	9.9	1.3	4.6	1.4
Fri	8.1	8.2	1.8	9.0	1.7	4.5	1.4
Sat	8.2	8.2	1.6	8.4	1.5	4.5	1.3
Sat	8.2	8.2	1.6	9.3	1.3	4.6	1.3
AVG:	8.3	8.3	1.6	9.4	1.5	4.6	1.4